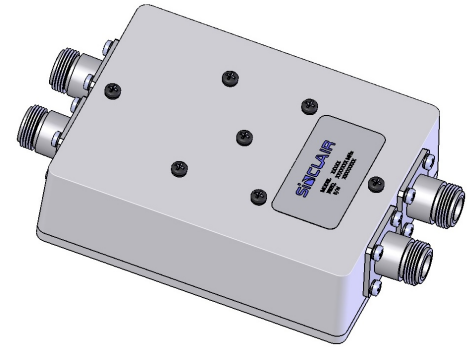


HH4141C-1 Coupler, 70/30 split, 214 MHz bandwidth, 300 Watts, 746-960 MHz

- Typ insertion loss of 1.8 +/- 0.2 dB and 5.5 +/- 0.4 dB
- 214 MHz Bandwidth
- 300 Watts power handling

Sinclair's new unbalanced hybrid coupler provides isolation over the whole 746-960 MHz band and is capable of handling up to 300W of power. The space saving package allows the coupler to be mounted in a 1U high tray. Available in either 70/30 or 80/20 splits.



www.sinctech.com

Region	United States	Europe, Middle East and Africa	Caribbean and Latin America	Canada and rest of the world
<b>Telephone</b>	USA: 1 800 263 3275	International: +44 (0) 1487 84 28 19	International: +1 905 726 7676	Canada: 1 800 263 3275 International: +1 905 727 0165
<b>E-mail</b>	salesusa@sinctech.com	salesuk@sinctech.com	salesla@sinctech.com	salescan@sinctech.com

### Electrical Specifications

Frequency Range	MHz	746 to 960	
VSWR (max)		1.25:1	
Insertion Loss (max)	dB	2	*1
Impedance	Ω	50	
Connectors		N-Female	
Power Rating	W	300	
Isolation (min)	dB	20	

### Notes

\*1 : 2.0 for 70% side. 5.9 dB for 30% side.

### Mechanical Specifications

Depth	in (mm)	4.7 (119)
Length/ Height	in (mm)	1.3 (33)
Width	in (mm)	3.7 (94)
Weight	lbs (kg)	0.3 (0.14)
Shipping dimensions	in (mm)	13x9x3 (330x229x76)

### Environmental Specifications

Temperature range	°F (°C)	-22 to +140 (-30 to +60)
-------------------	---------	--------------------------

www.sinctech.com

Region	United States	Europe, Middle East and Africa	Caribbean and Latin America	Canada and rest of the world
<b>Telephone</b>	USA: 1 800 263 3275	International: +44 (0) 1487 84 28 19	International: +1 905 726 7676	Canada: 1 800 263 3275 International: +1 905 727 0165
<b>E-mail</b>	salesusa@sinctech.com	salesuk@sinctech.com	salesla@sinctech.com	salescan@sinctech.com